

project pollinator



Butterflies and Their Hosts



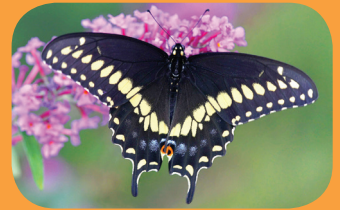
Swamp Milkweed
Asclepias incarnata



Monarch
Danaus plexippus



Golden Alexander
Zizia aurea or *zizia aptera*



Black Swallowtail
Papilio polyxenes



New England Aster
Symphotrichum novae-angliae



Pearl Crescent
Phyciodes tharos



Spicebush
Lindera benzoin



Spicebush Swallowtail
Papilio troilus



Purple Poppy Mallow
Callirhoe involucrata



Gray Hairstreak
Strymon melinus



Rose Mallow
Hibiscus lasiocarpus



Painted Lady
Vanessa cardui



Partridge Pea
Chamaecrista fasciculata



Cloudless Sulfur
Phoebis sennae



Switch Grass
Panicum virgatum



Grass Skipper
Hesperiidae



False Blue Indigo
Baptisia australis



Silver-Spotted Skipper
Epargyreus clarus

 SOPHIA M. SACHS
BUTTERFLY HOUSE
MISSOURI BOTANICAL GARDEN

Learn More
about Project Pollinator at
butterflyhouse.org/projectpollinator