



MISSOURI BOTANICAL GARDEN

2015 annual report

Writer and Editor: Andrea Androuais

Designers: Morgan Hutcherson, Andrea Androuais, and Katie Koschoff

Photography: Hayden Andrews, Dan Brown, Jim Cocos, Claire Cohen, Karen Fletcher,

Sheridan Hentrich, Ryan Lay, Jean McCormack, Sara Niel, Kat Niehaus, Mary Lou

Olson, Michelle Scherer, and Mariel Tribby. Baden photos courtesy of Meg Hoester;

Costa Rica photos courtesy of Leighton Reid; Madidi photos courtesy of Peter

Jørgensen; and Madagascar photos courtesy of Chris Birkinshaw.

Climatron® is a registered servicemark of the Missouri Botanical Garden.

The Missouri Botanical Garden is an Equal Opportunity Employer.

© 2016 Missouri Botanical Garden

to discover and
share knowledge
about plants and
their environment
in order to preserve
and enrich life.

mission of the Missouri Botanical Garden



from the president



Although the Missouri Botanical Garden is an historic institution with deep roots into the 1800s, its mission reflects important and contemporary needs for plant discovery, the importance of conservation, and the impact these have on people. A healthy, biodiverse environment is, after all, essential to address some of today's most pressing challenges—global change, biodiversity loss, poverty, education, food security—and to ensure a safe, healthy future for generations to come.

This year, we celebrated the essential connections between plants and people. From our plant discoveries and conservation efforts to our community events and projects, 2015 brought many wonderful opportunities for us to share our knowledge about the plant world and enrich people's lives. We welcomed over a million people at all our sites, including school groups, tourists, families, visiting researchers, and more. And there almost 10 million visits to the Garden's website. Visitors from across the United States and around the world enjoyed our summer exhibit, Lantern Festival: Magic Reimagined, and participated in the 9th International Congress on Education in Botanic Gardens that we hosted in the spring and organized with Botanic Gardens Conservation International (BGCI).

Part of the Lantern Festival's purpose was to highlight for visitors our important conservation and research work and partnerships in China. With our local and global efforts and through our partnerships with other conservation leaders throughout the world, I am pleased to see that the Garden continues to develop a leadership position in the world of plant conservation. As one of the organizations leading efforts to achieve the targets of the Global Strategy for Plant Conservation (GSPC), the Garden continued to grow its efforts and commitment to safeguarding the tens of thousands of plant species in danger of extinction.

Our mission also extended out into the community. The Garden played a leading role in establishing community gardens in different neighborhoods, providing community stakeholders workshops for citywide conservation efforts, and contributing to the greater understanding of the region's biodiversity through citizen science efforts. Equipped with some of the most comprehensive, extensive tools and information about plants and the environment, I'm proud to say the Garden continues to undertake effective plant conservation at home and around the world, becoming a model that others are emulating. I invite you to explore some of this year's highlights in this report and look forward to sharing with you more about all the amazing ways plants are connected to you, to me—to everyone.

A handwritten signature in black ink that reads "Peter Wyse Jackson". The signature is fluid and cursive.

Dr. Peter Wyse Jackson,
President



from the chair



Each year, I am amazed by how much the Garden's staff, volunteers, and supporters accomplish together. As you will see in this report, 2015 was no exception. The Missouri Botanical Garden hosted exciting and diverse events, partnered with our community, and increased plant science knowledge here and around the world.

In 2015, more than a million guests visited all our sites. More than 176,000 guests enjoyed Lantern Festival: Magic Reimagined. Our membership program expanded to 45,000 member households. More than 2,100 volunteers contributed 148,500 hours of service.

Our Herbarium grew through accessions and the adoption of the University of Missouri's 200,000-specimen herbarium. Garden scientists described more than 180 plant species. Colleagues from more than 40 countries joined us for an international congress on botanical garden education.

The Sophia M. Sachs Butterfly House added Nature T·R·E·K, an outdoor experience engaging all five senses. Shaw Nature Reserve created the Sense of Wonder Woodland to engage kids of all ages through nature play. It also hosted its first BioBlitz, and citizen scientists recorded more than 220 plants and animal species living there.

We also broke ground on the new PlantLab and renovated the Brookings Exploration Center in the new Edward Jones Hall. These are major milestones in the *Garden for the World* campaign, which reached the \$100-million goal by the end of the year. The trust and confidence shown by these generous donors are inspirational to everyone involved at the Garden.

With your support, we continue to share our mission with visitors online and on-site, with our neighbors and community partners, and with our colleagues around the world. The Garden remains a vibrant and must-see destination while also providing global leadership in the fields of plant science, horticulture, and conservation.

The Garden's numerous 2015 accomplishments would not be possible without you. Thank you for your leadership and your belief in the Garden's mission. With your help, we make a difference for plants and people around the world.

Lelia Farr,
Chair, Board of Trustees

board of trustees

Officers

Lelia J. Farr, *Chair*
Daniel A. Burkhardt,
Vice Chair
Peter S. Wyse Jackson,
MA, PhD, FLS,
President
Peter H. Raven, PhD,
President Emeritus

Members

Mrs. Walter F. Ballinger II
Catherine B. Berges
Arnold W. Donald
Sharon D. Fiehler

Robert R. Hermann, Jr.
David M. Hollo
David W. Kemper
Charles E. Kopman
Christopher Lewis
Carolyn W. Losos
Daniel J. Ludeman
W. Stephen Maritz
Cynthia S. Peters
Nicholas L. Reding
Steven C. Roberts, Sr.
Marsha J. Rusnack
Rakesh Sachdev
Stephen C. Sachs
Scott C. Schnuck

Thad W. Simons
Rex A. Siquefield
Michael K. Stern, PhD
Andrew C. Taylor
Eugene M. Toombs
Josephine Weil
Robert M. Williams, Jr.

Ex Officio

Thomas F. George, PhD
Benjamin H. Hulsey
Fred P. Pestello, PhD
Jeff Pittman, PhD
The Honorable Francis
G. Slay

Bishop George Wayne
Smith
The Honorable Steven
V. Stenger
Rick Sullivan
Mark S. Wrighton, PhD

Members Emeriti

Clarence C. Barksdale
John H. Biggs
Stephen F. Brauer
William H. T. Bush
Bert Condie III
Prof. Sir Peter R. Crane
FRS

L. B. Eckelkamp, Jr.
M. Peter Fischer*
Marilyn R. Fox
Robert R. Hermann
Edward D. Higgins
Paula M. Keinath
Rosalyn H. Kling
Robert E. Kresko
Hal A. Kroeger
June M. Kummer
James S. McDonnell III
Cheryl Morley
Evelyn Edison Newman*
Roy Pfauch
Mabel L. Purkerson, MD

Peggy Ritter
Joseph F. Shaughnessy
Nancy R. Siwak
Robert B. Smith III
Nora R. Stern
William K. Tao, DSc
Jack E. Thomas
Jane S. Tschudy
John K. Wallace, Jr.
O. Sage Wightman III
Roma B. Wittcoff
Honorary
Surinder (Suri) Sehgal,
PhD

*deceased



welcome



international congress

From April 26 through May 1, the Garden hosted more than 300 delegates from 41 countries for the Botanic Gardens Conservation International's (BGCI) 9th Congress on Education in Botanic Gardens. The Biodiversity for a Better World congress brought some of the world's most passionate advocates for plants as they play a leading role in shaping a world in which biodiversity is understood, valued, and strengthened. During the event, delegates toured the Garden, Butterfly House, Shaw Nature Reserve, and other natural areas in the region, including Cahokia Mounds, Forest Park, and the Audubon Center at Riverlands. With millions of people visiting botanical gardens every year, BGCI supports their education programs and their influence in helping to create a world in which plant diversity is valued, secure, and supporting all life.

At the congress, Dr. Rainer Bussmann, Director of the Garden's William L. Brown Center, presented the 7th William L. Brown Award for Excellence in Genetic Resource Conservation to Dr. Cary Fowler, former head of the International Conference Program on Plant Genetic Resources at the U.N. Food and Agricultural Organization (FAO). The congress was made possible thanks to the support of Andrew Barnett and Louisa Hooper of the Calouste Gulbenkian Foundation, The Boeing Company, Cindy and Sandy Peters, David and Cheryl Morley, David Orthwein, Kathy McKinnon and the Sylvia Scholarship Fund, MilliporeSigma, Nick Reding, and Sharon and Dale Fiehler.

lantern festival

In ancient Chinese legends, the Flower Fairy oversees all the flowers on Earth, determining their color, blooming season, scent, location, and other qualities. Flowering, however, is a complex process dictated by day length and temperature and has been affected by climate change. Considering plants have ecological, economic, and medicinal uses, it is crucial to study its impact on plants and the environment. From China to Missouri, Garden researchers are studying how changes in climate are disrupting pollination patterns, plant physiology, and plant-animal symbioses.

Behind each installation in this year's Lantern Festival: Magic Reimagined are stories that capture legends, cultural references, and connections with the Garden. *Flower Fairies* was just one example. The lanterns were designed to celebrate China's flora, the Garden's horticultural and research work, and the importance of plant conservation.

The special exhibit, presented by Emerson, featured 22 unique lantern sets crafted from silk and steel. A total of 176,271 visitors experienced the exhibit at night.

41

countries represented at the bgci education in botanic gardens congress

85%

of lantern festival exhibit materials were recycled, reused, or repurposed

\$829K

revenue from member visits to lantern festival: magic reimagined



community



a garden for all

In June, a group of teens began building the Baden Youth and Community Garden. With the help of Garden educators, they built 18 raised beds and a compost bin, and planted vegetables and fruit trees. For the next eight weeks they learned about growing plants, soil and plant nutrition, composting, and biodiversity. They also learned social and professional skills usually developed in the workplace.

The garden is a pilot project in collaboration with the historic Baden neighborhood in north St. Louis, the City of St. Louis's Urban Vitality & Ecology initiative, BiodiverseCity St. Louis, the Missouri Botanical Garden, the Riverview West Florissant Development Corporation, STL Youth Jobs, the Metropolitan St. Louis Sewer District, the Missouri Department of Conservation, Our Lady of Holy Cross Church, and a host of other community organizations. Thanks to the support of a private donor, the project will continue through 2017.

Over the summer, neighbors and community members watched the group grow fruits and vegetables including tomatoes, squashes, and greens. They also saw a vacant lot transformed into a vibrant, green space to stroll, gather, and connect with nature. Now that the teens have gone back to school, the youth garden has truly become a community garden. The Garden's Education team continues to host a variety of workshops and events to make the community aware of the garden and of the ecological, economic, and social benefits it provides.

milkweeds for monarchs

The Garden hosted the 2015 Milkweeds for Monarchs Community Workshop in the summer in partnership with the City of St. Louis, the Saint Louis Zoo, and BiodiverseCity St. Louis. More than 75 local educators and community leaders participated in this one-day event to envision their neighborhoods as nature-rich places. The event was part of the capacity-building efforts of Milkweeds for Monarchs: The St. Louis Butterfly Project, and activities included the planting of a monarch garden on Garden grounds and information sessions about monarchs, butterfly-attracting plants, and citizen-science opportunities. Attendees also walked away with lesson plans and maps showcasing existing community assets and potential plans to be a part of this city-wide effort. The workshop, along with school/community monarch garden installations and programming throughout the year, was supported by the Trio Foundation of St. Louis and a grant from the U.S. Fish & Wildlife Service.

15

K-8 students who received gardening and ecology lessons at the baden youth and community garden

8

Garden-led community workshops held at the baden youth and community garden

28

butterfly gardens planted by the garden's education team



outdoor fun



nature play

One is more likely to be a steward of the environment, explains Sheila Voss, Vice President of Education, if one spends time experiencing nature with loved ones, whether that's a backyard, a local park, or a big natural reserve. At the Garden, Butterfly House, and Shaw Nature Reserve, children and adults alike experience outdoor nature play and get the best of both worlds. Nature T-R-E-K opened at the Butterfly House Memorial Day weekend. Located in the outdoor Native Butterfly Garden, the 250-foot-long trail is the perfect way for adults to play outside alongside their little ones while learning more about nature with five interactive stations focused on each one of the senses. Nature T-R-E-K was made possible by the support of the Nature Play Begins at Your Zoo & Aquarium grant by the Association of Zoos and Aquariums (AZA) and the Disney Worldwide Conservation Fund. The Butterfly House was the first dedicated insect facility in the U.S. accredited by the AZA.

At Shaw Nature Reserve, the new Sense of Wonder Woodland connects the popular Nature Explore Classroom to the Pinetum Lake and the rest of the Reserve. This new space continues the tradition of nature play and invites guests of all ages to just have fun and explore the beauty of the natural world. Attractions include a fire tower, a new Tree-Ceratops climbing structure, an elf house, critter houses and apartments, a vine tunnel, and a butterfly swing. Inspiring children to go outside and play means they can grow up loving nature and become stewards of our planet. The Sense of Wonder Woodland was made possible thanks to the generosity of the Ott Family in honor of Mary Ott.

catalog of biodiversity

Participants in the 10th annual Academy of Science–St. Louis BioBlitz documented a record-breaking 490 observations and 223 species of plants and animals at Shaw Nature Reserve. The intensive, two-day event in September brought together leading scientists, environmental professionals, naturalists, and citizen scientists of all ages to find and identify as many species as possible at the Nature Reserve. In addition to the general public event on Saturday, area schools from the Ferguson-Florissant District, St. Louis Public Schools, Eureka, Washington, and Meramec Valley also participated on Friday during a schools-only event. For the first time in its history, BioBlitz data is available through the iNaturalist data bank at www.inaturalist.org.

5

stations—one for each of the senses—along the butterfly house's new nature t-r-e-k

1

elf house, made out of a sycamore tree (*Platanus occidentalis*) stump found at shaw nature reserve, now located in the sense of wonder woodland

500+

citizen scientists tallied the biodiversity at shaw nature reserve during bioblitz



exploration



horticulture field work

Thanks to the support of the St. Louis Herb Society, the St. Louis Master Gardeners, Mr. David Orthwein, and Marion and Van-Lear Black, four members of the Garden's Horticulture team traveled to Mauritius in February. The expedition's purpose was to conserve threatened and critically endangered species through training, propagation, and the development of *ex situ* conservation practices. In partnership with the Mauritian National Parks and Conservation Service (NPCS) and the Mauritian Wildlife Foundation (MWF), the team helped repair and rebuild Pigeon Wood Nursery, collected specimens for propagation, provided training and workshops, and met with government staff involved in plant conservation there. The International Union for Conservation of Nature (IUCN) ranks Mauritius as having the third most endangered flora in the world.

Garden horticulturists also participated in different international capacity-building projects as part of the U.S.–Russia Botanical Exchange Program. In the spring, Garden horticulturist Sara Neil and Senior Horticulture Manager Jim Cocos traveled to Volgograd, Russia to collaborate with Russian horticulturists, learn more about their botanical gardens, go on collecting trips, learn about plants native to the area and growing in the wild, and more.

Horticulturists David Gunn and Mariel Tribby also participated in a two-week trip to Colorado and Utah as part of the exchange program. They were joined by Mike Bone from Denver Botanic Garden, Dr. Vladimir Shatko from the Moscow Main Botanic Garden, and Dr. Inna Filatova from Moscow State University. Together, they explored a wide variety of plant communities, observed rare and endangered plants, learned about plant conservation and invasive plant control strategies, and collected seed to add to the Garden's collection. Both trips were made possible by a grant that the U.S. Department of State awarded to the Garden in 2014 to support the exchange program.

herbarium grows

As some herbaria around the world downsize or close altogether, the Garden's Herbarium continues to grow. It started with 62,000 specimens from Johann Bernhardi's estate that Dr. George Engelmann purchased in 1857 for Garden founder Henry Shaw. Today it has more than 6.6 million specimens, making it the second largest in the United States and one of the largest in the world. In May 2015, the University of Missouri–Columbia (MU) announced that it would be moving its entire herbarium collection to the Garden. All of MU's Dunn-Palmer Herbarium specimens—nearly 200,000—moved to the Garden in the fall. They will gradually be added to the Garden's Herbarium.

39

endangered taxa that were propagated in the pigeon wood nursery in mauritius

19

iris accessions added to living collections via the u.s.–russia botanical exchange program

144

steel cases that arrived at the garden containing the entire dunn-palmer herbarium



conservation



unparalleled conservation resource

In 2001, the Garden launched the Madidi Project in collaboration with the National Herbarium of Bolivia and the Autonomic University of Madrid. The goal was to carry out research in tropical forests that could provide a detailed knowledge about the distribution of species and biodiversity in one of the world's largest and most diverse protected areas.

After more than a decade of uninterrupted work, the project today provides data unparalleled in the tropical Andes. It is also a key component in many other conservation studies, including one published in 2015 in the journal *Science Advances*. The study's authors, including Garden Curator and Madidi Project Director Dr. Peter Jørgensen, found that deforestation threatens between 36% and 57% of all the tree species in the Amazon, increasing the number of threatened plant species around the world by 22%. The Madidi Project's tree data proved to be a key piece of the study.

210,000

approximate number trees of 2,600 species measured and identified by the madidi project over more than 10 years

ecological restoration

For Dr. Leighton Reid, Restoration Ecologist at the Garden's Center for Conservation and Sustainable Development, 2015 was filled with highlights in his ecological restoration projects in Costa Rica. This includes the results of an experiment using drones to monitor progress in restoration projects. Drone-based measurements of canopy height closely matched those done through in-person field measurements and also detected canopy gaps, predicted fruit-eating bird movements, and estimated above-ground biomass.

Another experiment showed that tree planting accelerates the restoration of epiphytes, which have a hard time finding a place to grow in second-growth forests. Dr. Reid and his colleagues also began experimenting with the use of fig trees in ecological restoration projects. Fig trees have the capability of resprouting from vegetative cuttings as easily as they do from seeds, and they produce fruits that are eaten by many animals throughout the year. With 80% of the 128 giant fig stakes planted in 11 sites in Costa Rica in 2015, the team can now study their potential to attract seed-carrying animals that would have otherwise not been introduced to the restored forest.

13

restoration sites in costa rica surveyed for vascular epiphytes

new protected areas

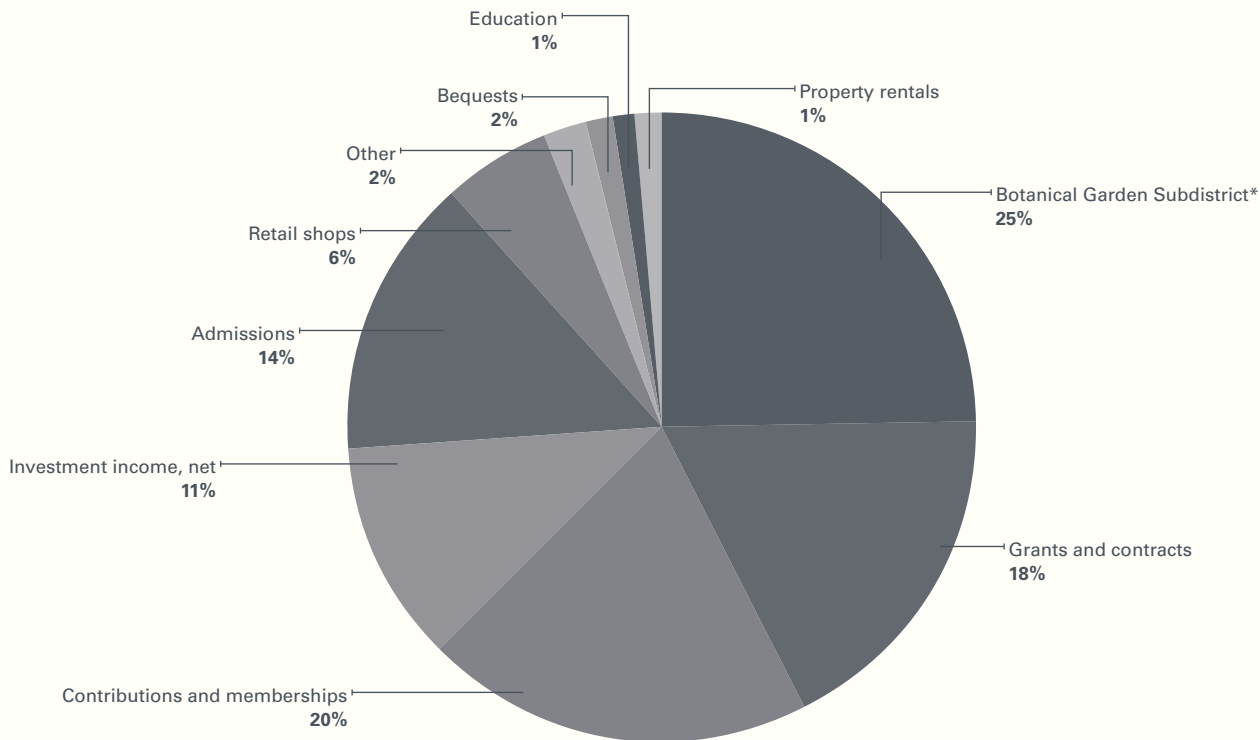
Starting in 2000, Garden staff in Madagascar became increasingly concerned that the country's plant conservation efforts were inadequate. They initiated a project to identify the areas that needed protection. In 2015, the government in Madagascar issued a series of decrees formally establishing 94 new protected areas, almost half of which had been identified by the Garden's study more than 10 years earlier. Twelve of these new reserves were determined to be priorities for plant conservation and are now being managed by the Garden in collaboration with local communities.

58

seed accessions collected in madagascar in 2015 and currently in propagation

financial information (year ended December 31, 2015)

2015 Operating Support and Revenue



2015 Operating Support and Revenue

Public Support

Botanical Garden Subdistrict*	\$10,600,000
Contributions and memberships	8,515,078
Bequests	594,931
Total Public Support	19,710,009

Revenue

Grants and contracts	7,587,268
Investment income, net	4,835,662
Admissions	6,049,968
Retail shops	2,399,429
Other	941,375
Education	528,627
Property rentals	495,152
Total Revenue	22,837,481

Total Operating Support and Revenue

\$42,547,490

2015 Operating Expenses

Operating Services

Science and conservation	\$9,464,686
Horticulture	3,433,271
Education	2,829,952
Public events	3,787,906
Retail shops	2,248,695
Contract services	1,526,233
Sustainability	1,456,822
Butterfly House	1,133,091
Shaw Nature Reserve	995,126
Bioinformatics	593,886
Visitor Services	466,290
Total Operating Services	27,935,958

Supporting Services

Management and general	6,891,658
Maintenance and improvements	3,315,760
Membership department	1,054,542
Utilities	837,680
Institutional Advancement/fundraising	436,079
Security	738,044
Total Supporting Services	13,273,763

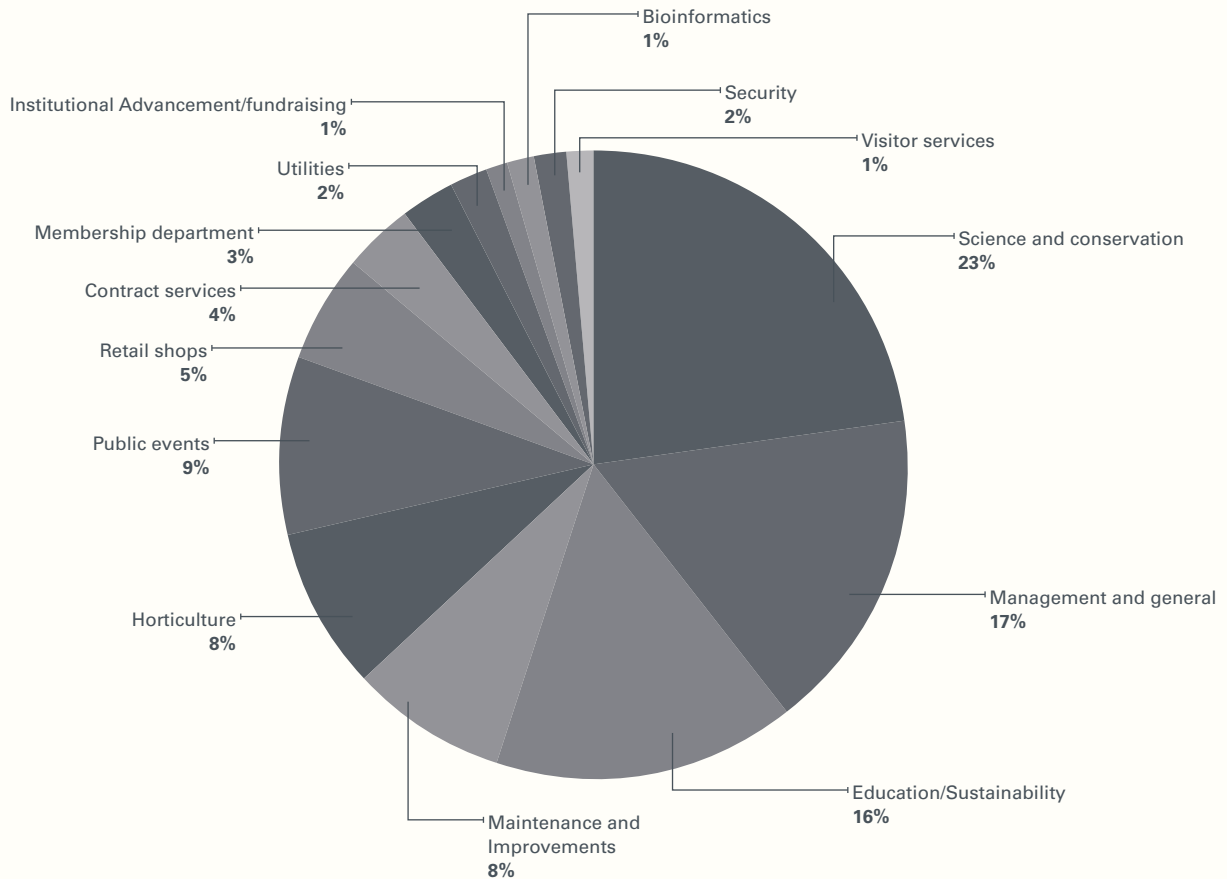
Total Operating Expenses

\$41,209,721



financial information

2015 Operating Expenses



2015 Fund Balances

Operating Fund

Total operating support and revenue	\$42,547,490
Total operating expenses	(41,209,721)
Total operating transfers	(574,439)
2015 Operating Fund excess/(deficit)	763,330
2015 Pension liability adjustment	(806,807)
1/1/15 Operating Fund balance	4,817,666
12/31/15 Operating Fund	4,774,189

Endowment Fund	119,244,502
Land, Building, and Equipment Fund	78,816,391
Capital Campaign Fund	9,655,508
Gift Annuity Fund	12,465
Total All Funds	\$212,503,055

*Botanical Garden Subdistrict

Since 1972, residents of St. Louis City and County have generously supported the Metropolitan Zoological Park and Museum District (ZMD). The ZMD is a property tax-supported district that distributes funds through five cultural subdistricts, which include the Botanical Garden Subdistrict. The Botanical Garden Subdistrict has provided support for the Missouri Botanical Garden since 1983. The Garden is grateful for the continued support of the Botanical Garden Subdistrict.

Commissioners for the ZMD and the Botanical Garden Subdistrict as of April 2016 are listed on page 16.

Financial information used in this report was obtained from the 2015 Missouri Botanical Garden audited consolidated financial statements. These financial statements can be obtained by visiting www.mobot.org/reports.



thank you

members' board

The Members' Board leadership group organizes the activities and events that enhance and encourage membership, expand awareness in the community, and increase financial support for the Garden's mission.

Mary Kay Denning, <i>President</i>	Jeanie C. Davis Ellen Dubinsky	Maureen R. Jennings Ellen E. Jones	Parker McMillan Isabelle C. Morris	Mary Lee Salzer-Lutz Nancy L. Sauerhoff	Elizabeth Teasdale Jane S. Tschudy
Ann M. Bowen	Kathy Durel	Celeste Kennedy	Janet Mika	Susie Littmann Schulte	Norma Williams
Eileen M. Carr	Audrey Feuerbacher	Lynn Koeneman	Anita D. O'Connell	David Schulz	Debbie Wilhelm
Sue Cohen	Michael C. Heim	Martha LaFata	Sue B. Oertli	Carol A. Squires	Douglas R. Wolter
Kristen Cornett Knapp	Janet Hennessey	Janet B. Lange	Sue M. Rapp	Susan Squires	
Jean Corse	Janice A. Hermann	Stepanie Littlefield	Susan N. Rowe	Goldschmidt	
Jeanne P. Crawford	Leslie P. Hood	Mary V. Longrais	Marsha J. Rusnack	Patricia Steiner	
Angela Dalton	Laure B. Hullverson	Virginia McCook	Betty Salih	Nora R. Stern	

young friends council

The Young Friends Council engages the young professionals of the St. Louis community with the global work of the Garden, developing events and initiatives to grow the Young Friends Program and increase engagement.

Cindy Hults, <i>Chair</i>	Hilary Grunewald	Janice Phelps
Lucy Adams	Kirstin Hahn	Justin L. Randall
Jay Alberts	Dottie Hembra	Kimberly Rayford
Gwen Arenberg	Chrissy Hill Rogers	Daniel Richter
Matt Arnold	David Hults	Abby Risner
Robyn Ast-Gmoster	Kati Johnson	Erika Sevigny
Adam Berkowitz	Michelle Johnson	Elizabeth M. Shaheen
Patrick Bousquet	Stephanie Kessler	Andrew J. Sommer
Ashley Brewer	Thayer	Molly Spowal
Carolyn Caesar	Frances Knechel	Cary Stalneck
Ben Cahill	Brad Landsbaum	Sara Steindorf
Lindsey Carlie	Samir Mehta	Katherine Stocke
Allison Cohn	Rebecca Miller, PhD	John Strahlman
Emily Conley	Jennifer Mullikin	Megan Strout Maher
Paul Cowherd	Joseph A.	Lauren Van Dyke
Ashley Diaz	Nonnenkamp	Kelly Whitman
Ryan Furniss	Rebecca Patel	
Amanda Glenn	Julia L. Peters	

zoological park and museum district

The Metropolitan Zoological Park and Museum District (ZMD) is a tax-supported cultural district governed by an eight-member board of directors, each appointed for a four-year term by the Mayor of the City of St. Louis and by the St. Louis County Executive.

Thomas J. Campbell, <i>Chair</i>	Darnetta Clinkscale, <i>Assistant Secretary</i>
Christine A. Chadwick, <i>Vice Chair</i>	Michelle Harris, <i>Board Member</i>
Thelma V. Cook, <i>Immediate Past Chair</i>	Thomas C. Mummert, <i>Board Member</i>
Robert E. Eggmann, <i>Treasurer</i>	
Robert G. Lowery, Sr., <i>Secretary</i>	

botanical garden subdistrict

The ZMD levies an annual tax on property on behalf of five subdistricts, including the Botanical Garden Subdistrict. The subdistrict contracts with the Garden to provide botanical services.

Yemi Susan Akande-Bartsch	Marjorie M. Weir
Adrian E. Bracy	Francis Yueh
John C. McPheeters	Hillary B. Zimmerman
Marcia B. Mellitz	
Brian A. Murphy	<i>Non-voting advisory members:</i>
Martin Schweig, Jr.	Janice M. Nelson
Pamela Shephard	James H. Yemm

2015 event sponsors

Best of Missouri Market

Blue Owl Restaurant and Bakery
Commerce Bank
Drury Hotels Company
Edward Jones
The Home Depot
KLOU
Ronnoco Coffee
Schnuck Markets, Inc.
Waterway Gas & Wash
Wehrenberg Theatres

BGCI

Andrew Barnett and Louisa Hooper
of the Calouste Gulbenkian
Foundation, *Title Sponsor*
The Boeing Company
Cindy and Sandy Peters
David and Cheryl Morley
David Orthwein
Kathy McKinnon and the
Sylvia Scholarship Fund
MilliporeSigma
Nick Reding
Sharon and Dale Fiehler

Breakfast with Santa

Macy's, *Presenting*

Gardenland Express

Wells Fargo Advisors, *Presenting*
CBIZ & Mayer Hoffman McCann, P.C.
Mr. and Mrs. James G. Berges

Garden Glow

Wells Fargo Advisors, *Presenting*
Ameren Corporation
The Boeing Company
Bunge North America
David and Lelia Farr
Maritz
Moneta Group—Dan and Peggy West
Monsanto
PNC Bank

Ghouls in the Garden

Macy's, *Presenting*

Green Ball

Garrett Paper, Inc.
Microgrid Energy
Office Essentials, Inc.
St. Louis Composting, Inc.
St. Louis Regional Chamber

Media

Healthy Planet Magazine
James Mulligan Printing Company
KDHX
Sauce Magazine

Green Homes Festival

Ameren Corporation, *Presenting*
Brinkmann Constructors
Graybar Electric Company, Inc.
Laclede Gas Company
Metro Lighting
Metropolitan St. Louis Sewer District
Missouri American Water
Missouri Department of Economic
Development
Missouri Environmental Fund
Sears Home Services
St. Louis Composting
UMB Bank

Japanese Festival

Nidec Motor Corporation
Novus International
TOYOTA Bodine

Lantern Festival: Magic Reimagined

Emerson, *Presenting*
Ameren Missouri Pure Power
Anheuser-Busch
The Boeing Company
Centene Charitable Foundation
Charles Gallagher
Corporate Council
Crawford Taylor Foundation
Drury Hotels
Gene Toombs
Jeanne and Steve Maritz
The Konzen Family
Liz Green
Members' Board
Monsanto
Sachs Properties
UMB Bank
Wells Fargo Advisors
Young Friends Council

Trivia Night—Garden Style

Macy's, *Presenting*
Commerce Bank

Tulip Trot

Macy's, *Presenting*

corporate council

The dedicated representatives of the Corporate Council collaborate with the Garden to further relationships with the corporate community through education, sustainable business programs, volunteer opportunities, and special events.

Ms. Jenny L. Hoelzer, <i>Corporate Council Chair, Commerce Bank</i>	Ms. Patricia Hernandez, <i>Emerson</i>	Ms. Ginny Powell, <i>Hager Companies</i>
Ms. Emily Andrews, <i>U.S. Green Building Council–Missouri Gateway Chapter</i>	Mr. Chip Hiemenz, <i>Hunter Engineering Company</i>	Mr. Tim Powers, <i>Four Seasons Hotel St. Louis</i>
Ms. Lindsay Auer, <i>Standing Partnership</i>	Mr. Jesse Hill, <i>Edward Jones</i>	Mr. Edward R. Rataj, <i>CBIZ & Mayer Hoffman McCann P.C.</i>
Mr. Robert M. Bain, <i>Senniger Powers LLP</i>	Ms. Kelly Hoskins, <i>Wehrenberg Theatres Inc.</i>	Mr. Jon N. Reed, <i>Graybar Electric Company, Inc.</i>
Mr. Jake Barnett, <i>Morgan Stanley Wealth Management</i>	Mr. David Hunnius, <i>RBO PrintLogistix</i>	Ms. Christi Reiter, <i>Cass Information Systems, Inc.</i>
Ms. Kasey Bergh, <i>Purina</i>	Mr. Jeffrey Kaiser, <i>CBRE</i>	Mr. Pete Richardson, <i>PNC Bank</i>
Mr. Donald J. Brown, <i>Guarantee Electrical Company</i>	Mr. Jerry Kluge, <i>J.W. Terrill, a Marsh & McLennan Agency LLC Company</i>	Ms. Glenda Ricketson, <i>First Bank</i>
Mr. Kenneth H. Crawford, <i>Argent Capital Management</i>	Mr. Thompson Knox, <i>SteadyRain, Inc.</i>	Ms. Megan Ridgeway, <i>AIA, LEED AP, Arcturus</i>
Ms. Christi Dixon, <i>Monsanto</i>	Ms. Carleen S. Kramer, <i>Catering St. Louis, Inc.</i>	Mr. Christoph H. Schmidt, <i>CSI Leasing, Inc.</i>
Mr. Gregory L. Dryden, <i>Fifth Third Bank</i>	Ms. Jennifer Larsen, <i>Maritz Holdings, Inc.</i>	Mr. Shawn Schukar, <i>Ameren</i>
Mr. Jay Ellington, <i>CDG Engineers</i>	Mr. David B. Lemkemeier, <i>Lewis Rice LLC</i>	Ms. Deb Seidel, <i>Bunge North America, Inc.</i>
Mr. Mark Falkowski, <i>Husch Blackwell LLP</i>	Mr. Richard Lindquist, <i>Morgan Stanley Wealth Management</i>	Ms. Danielle Skosky, <i>Ronnoco Coffee, LLC</i>
Ms. Jessica Fischer, <i>Ernst & Young LLP</i>	Mr. C. Eric Lobser, <i>Laclede Gas Company</i>	Ms. Deborah Slagle, <i>MilliporeSigma</i>
Ms. Wendy Flanagan, <i>FleishmanHillard</i>	Ms. Diane Lochner, <i>PGAV, Inc.</i>	Ms. Julie Steininger, <i>Standing Partnership</i>
Mr. Jason Florek, <i>KPMG LLP</i>	Ms. Linda L. Lockwood, <i>Regions Bank</i>	Ms. Suzy Stone, <i>Macy's</i>
Ms. Pamala L. Funk, <i>The City of O'Fallon, Illinois</i>	Ms. Jeania Lowery, <i>Bank of America</i>	Mr. Jason P. Thein, <i>Thompson Coburn LLP</i>
Mr. Timothy W. Gamma, <i>Gamma Tree Experts</i>	Ms. Gigi MacMullan, <i>Centric Group, LLC</i>	Mr. Will Tunis, <i>BMO Harris Bank</i>
Ms. Diane Grimsley, <i>Tarlton Corporation</i>	Mr. Joseph Marcellini, <i>SteadyRain, Inc.</i>	Mr. Peter Van Cleve, <i>Bryan Cave LLP</i>
Mr. Richard Halpern, <i>The Daniel and Henry Company</i>	Mr. Wally McClellan, <i>Office Essentials, Inc.</i>	Mr. Tom Walsh, <i>Drury Hotels Company LLC</i>
Mr. Scott Harding, <i>SCI Engineering</i>	Mr. Douglas D. Mueller, <i>Anders CPAs + Advisors</i>	Mr. Steve H. Wang, <i>Protiviti Inc.</i>
Ms. Laurel Harrington, <i>Christner Inc.</i>	Ms. Gayla Nunn, <i>ABNA Engineering, Inc.</i>	Ms. J. Nicci Warr, <i>Lewis Rice LLC</i>
	Mr. Steve O'Rourke, <i>Microgrid Energy</i>	Mr. Robert M. Williams, <i>Williams Patent Crusher & Pulverizer Company, Inc.</i>
	Ms. Amy Phillips, <i>Jacobs</i>	

corporate partners

Companies participating in the Corporate Partners Program make an annual membership gift. They receive Garden admission passes, tickets to public events, recognition among the Garden's 45,000 member households and the general public, and more. They can also appoint a representative to the Garden's Corporate Council leadership board (see above).

Principals

Ameren Corporation
The Boeing Company
Centene Charitable Foundation
Commerce Bank
Drury Hotels Company LLC
Emerson
Macy's
Monsanto Company
New Chapter, Inc.
PNC Bank
Renewal by Andersen
Anonymous
Wells Fargo Advisors

Shareholders

Anheuser-Busch Companies, Inc.
Bunge North America, Inc.
Edward Jones
Maritz Holdings, Inc.
MilliporeSigma
Purina
Schnuck Markets, Inc.
SteadyRain, Inc.
Total Wine & More

Underwriters

American Direct Marketing
Resources Inc.
Bryan Cave LLP
CBIZ & Mayer Hoffman McCann P.C.

The Daniel and Henry Company
Enterprise Holdings Foundation
The Graybar Foundation
Laclede Gas Company
Mercy
Missouri American Water
Nidec Motor Corporation
Novus International, Inc.
PGAV, Inc.
TOYOTA Bodine
UMB Bank, N.A.
Williams Patent Crusher & Pulverizer Company, Inc.

Investors

Argent Capital Management
AT&T
Bank of America
Investors (continued)
BMO Harris Bank
BSI Constructors Inc.
CBRE
Centric Group, LLC
Chemia Corporation
Chipotle Mexican Grill
Christner Inc.
CSI Leasing Inc.
Ernst & Young LLP
Express Scripts
Fifth Third Bank
Gamma Tree Experts

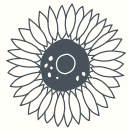
J.W. Terrill, a Marsh & McLennan Agency
LLC Company
KPMG LLP
Mallinckrodt Pharmaceuticals
MiTek Industries Inc.
Office Essentials, Inc.
Orion Genomics, LLC
Senniger Powers LLP

Supporters

ABNA Engineering, Inc.
Aetna
American Radiolabeled Chemicals
Anders CPAs + Advisors
Arcturus
Belden Inc.
bioMérieux
Cass Information Systems, Inc.
Catering St. Louis, Inc.
CDG Engineers, Inc.
CIC Group, Inc.
The City of O'Fallon, Illinois
Clean-Tech Company
Cushman & Wakefield
Dierbergs Markets, Inc.
First Bank
FleishmanHillard
Four Seasons Hotel St. Louis
Guarantee Electrical Company
Hager Companies

H.B.D. Contracting, Inc.
HOK
Holland Construction Services, Inc.
Hunter Engineering Company
Husch Blackwell LLP
Jacobs
Lewis Rice LLC
Microgrid Energy
Moonrise Hotel
Morgan Stanley Wealth Management
The Northern Trust Company
Pepsi Beverages Company
Protiviti Inc.
QRS Recycling
RBO PrintLogistix
Regions Bank
Ronnoco Coffee, LLC
SCI Engineering
Square One Brewery & Distillery
Standing Partnership
Systems Service Enterprises, Inc.
Tarlton Corporation
Thompson Coburn LLP
Urban Chestnut Brewing Company
U.S. Green Building Council–Missouri Gateway Chapter
Villa Lighting Supply, Inc.
Wehrenberg Theatres Inc.

by the numbers



15 years

since the **EarthWays Center** joined the Garden



10 years

since the **Native Plant School** started at Shaw Nature Reserve



15 bonsai

given to the Garden by the **Brooklyn Botanic Garden**

1692

year the **Anemone versalis L.** was collected by German botanist Jacob Breyne. The specimen, discovered in the Herbarium this year, is considered the oldest specimen in the collection—at least 50 years older than anything else known to be in the collection.



VOLUME 9

of the **Flora of North America** was published. The volume, which covers the rose family (Rosaceae), was dedicated to Dr. Walter Lewis.



\$2,000,000

of renewed support from Monsanto Company for the development of a **World Flora Online**. The gift extends the company's support for the project after a three-year, \$3,000,000 gift in 2012.

223 species

of plants and animals recorded at Shaw Nature Reserve during the 10th Academy of Science—St. Louis **BioBlitz**

180+

new plant species

described by Garden scientists in 2015



903

accessions

of **wild sources** added to the Garden's living collections, making up 41% of the total 2,168 accessions added in 2015

171

accessions

added to the Garden's **Seed Bank**

14%

of **Missouri native taxa** represented in the Garden's Seed Bank



45,848

member households



8%

increase over 2014

74,766

member attendance at **Lantern Festival**



428

employees

45

 years

of working at the Garden that **Paul Brockmann**, Senior Vice President of General Services, celebrated this year

"There's something different every day."
—Paul Brockmann



1,133,484

visitors



8%

increase over 2014

360 | 30

students teachers

the Garden worked with in four St. Louis Public Schools through its **Sprouting Science** early childhood education program.

28,000

new followers

the Garden gained across **Facebook, Twitter, Instagram, and Pinterest.**

399,707

visitors

who enjoyed **Lantern Festival: Magic Reimagined**, with 176,271 experiencing the special exhibit at night.



2,148

volunteers

who contributed 148,500 **hours of service**—the equivalent of 74 full-time employees.

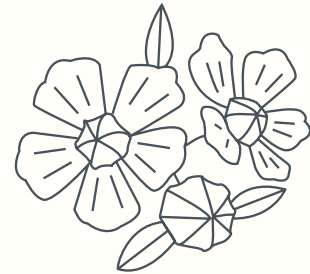
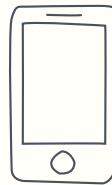
40

 years

of volunteering at the Garden that **Joanne Fogarty** celebrated this year

30%

increase over 2014



9,800,857

visits

visits to the **Garden's website** in 2015

management team



Dr. Peter Wyse Jackson
President
(314) 577-5110
peter.wysejackson@mobot.org



Robert Woodruff
Chief Operating Officer
(314) 577-5142
bob.woodruff@mobot.org



Dr. James Miller
Senior Vice President,
Science and Conservation
(314) 577-5176
james.miller@mobot.org



Donna McGinnis
Senior Vice President,
Community and Development
(314) 577-9495
donna.mcgininis@mobot.org



Paul Brockmann
Senior Vice President,
General Services
(314) 577-5129
paul.brockmann@mobot.org



Andrew Wyatt
Vice President, *Horticulture
and Living Collections*
(314) 577-9426
andrew.wyatt@mobot.org



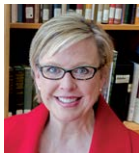
Deborah Frank
Vice President, *Sustainability
and Shaw Nature Reserve*
(314) 577-0279
deborah.frank@mobot.org



Sheila Voss
Vice President, *Education*
(314) 577-0284
sheila.voss@mobot.org



Olga Martha Montiel
Vice President, *Conservation
and Sustainable Development*
(314) 577-9412
olgamartha.montiel@mobot.org



Rebecca Ingram
Vice President,
Human Resources
(314) 577-5122
rebecca.ingram@mobot.org



Chuck Miller
Vice President,
*Information Technology and
Chief Information Officer*
(314) 577-9419
chuck.miller@mobot.org



Victoria Campbell
Director, *Sophia M. Sachs
Butterfly House*
(636) 530-0076
vickie.campbell@mobot.org



John Behrer
Director, *Shaw Nature Reserve*
(636) 451-3512
john.behrer@mobot.org





MISSOURI BOTANICAL GARDEN
4344 Shaw Blvd. • St. Louis, MO 63110 • (314) 577-5100 • www.mobot.org